

# L2F 定量柱塞泵/马达

## Fixed piston pump/motor L2F



- 斜轴式定量柱塞泵/马达，用于开式或闭式系统
- 当作泵使用时，流量与转速和排量成正比
- 当作马达使用时，输出转速和流量成正比而与排量成反比
- Axial piston unit of bent-axis design, with fixed displacement, used as either a pump or a motor, for open or closed circuit system
- When operated as a pump, for the flow is proportional to the drive speed and the displacement
- When operated as a motor, the output speed is proportional to the flow and inversely proportional to the displacement

### 型号说明 Type code

L2F	55	R	2	P	1
01	02	03	04	05	06

### 轴向柱塞马达/泵 Axial piston motor/pump

01	固定式斜轴设计 Bent-axis design, fixed displacement	L2F
----	--	-----

### 规格 Size

02	排量 Vg Displacement Vg (mL/r)	10	12	23	28	45	55	63	80	107	160	250	55
----	------------------------------	----	----	----	----	----	----	----	----	-----	-----	-----	----

### 旋转方向(从轴伸看) Direction of rotation(viewed from drive shaft)

03	顺时针 Clockwise	R
	逆时针 Counter-clockwise	L
	双向(不适用于开式回路中的泵) Bidirectional (not for pumps in open circuit)	W

### 壳体系列 Shell series

		10	12	23	28	45	55	63	80	107	160	250		
04	见壳体系列附图 See below shell series drawing	—	—	—	—	●	●	—	—	●	—	—	1	
		—	●	—	●	●	●	●	●	●	●	—	2	
		—	—	●	●	—	—	—	—	—	—	—	—	3
		●	●	—	—	—	—	—	—	—	—	—	—	4
		—	—	—	—	—	—	—	—	—	—	—	●	5

### 轴伸 Drive shaft

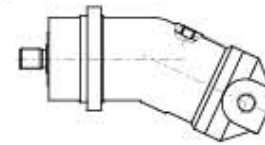
		10	12	23	28	45	55	63	80	107	160	250	
05	平键GB/T 1096-2003 Keyed shaft GB/T 1096-2003	●	●	●	●	●	●	●	●	●	●	●	P
	花键 DIN5480 Splined shaft DIN5480	●	●	●	●	●	●	●	●	●	●	●	Z

### 后盖 Rear cover

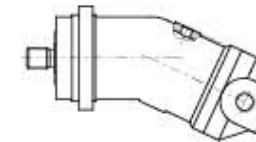
		10	12	23	28	45	55	63	80	107	160	250		
06	见后盖附图 See below rear cover drawing	●	●	○	●	○	—	—	—	●	—	—	1	
		—	—	—	●	—	●	●	●	●	●	●	2	
		—	○	●	—	●	●	●	●	●	●	●	—	3
		●	●	●	●	—	—	—	—	—	—	—	—	4
		—	—	—	—	—	—	—	—	—	—	—	—	5
		—	—	—	●	—	—	—	—	—	—	—	—	6
		—	—	—	●	—	—	—	—	—	—	—	—	8

### 壳体系列 Shell series

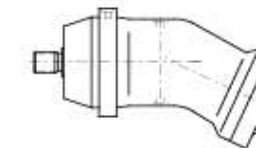
#### 系列 Series 1,3,4



#### 系列 Series 2

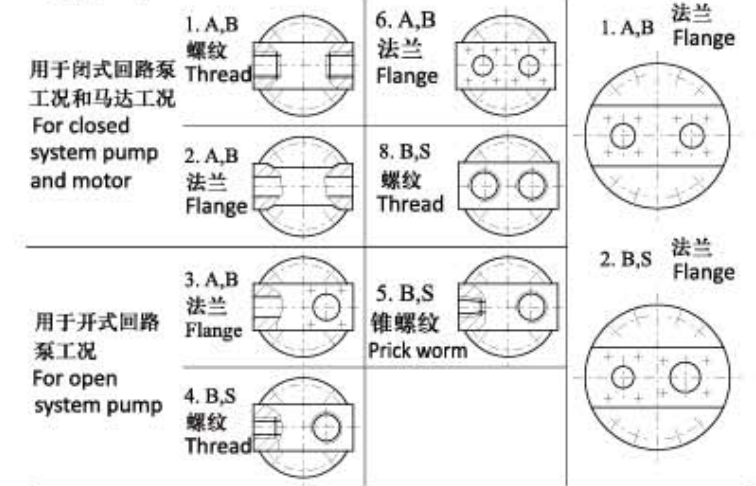


#### 系列 Series 5



### 后盖 Rear cover

#### (规格 Size)



### 技术参数 Technical data

规格 Size		10	12	23	28	45	55	63	80	107	160	250
排量 Displacement Vg(mL/r)		9.4	11.6	22.7	28.1	44.3	54.8	63	80	107	160	250
最高转速 Max. Speed (r/min)	闭式回路 Closed circuit	7500	6000	5600	4750	4500	3750	4000	3350	3000	2650	2240
	开式回路 Open circuit	0.09	4700	3750	3750	2800	2850	2360	2550	2120	1900	1650
	进口压力 Inlet pressure (Pabs=MPa)	0.10	5000	4000	4000	3000	3000	2500	2700	2240	2000	1750
最大功率 Max. power (kw)	闭式回路 Closed circuit	41	41	74	78	116	120	147	156	187	247	365
	开式回路 Open circuit	0.09	25	25	48	44	71	73	91	96	115	149
	进口压力 Inlet pressure (Pabs=MPa)	0.10	27	26	51	48	75	78	96	101	121	159
扭矩 Torque(N.m)	(Δp=10MPa)	15	18	36	44.7	70	87	100	127	170	254	398
	(Δp=35MPa)	52	65	126	156	247	305	351	445	595	890	1391
重量 Weight (kg)		5	5	12	12	23	23	33	33	44	63	88

● =可供货 Available ○ =可按要求供货 On request — =不可供货 Not available